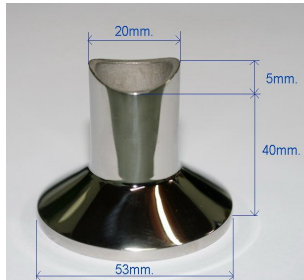


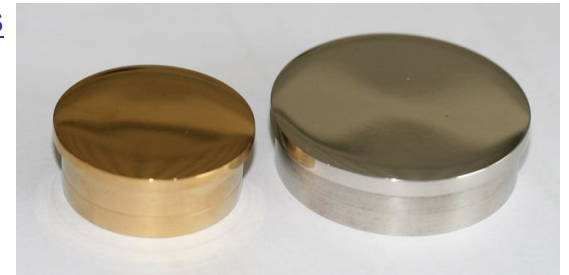
# Custom made Handrails for Elevators (AISI 304)

- Surface finishes: Mirror or Hairline
- Ti-colors: Gold / White-Gold / Copper / Bronze / Black / Silver-Grey / Nickel-Silver..
- Sections: Round 1.5" & 2", Oval 62 x 38mm., Rectangular tube or Flat bar (any)
- Optionally treated with Anti-fingerprint coating

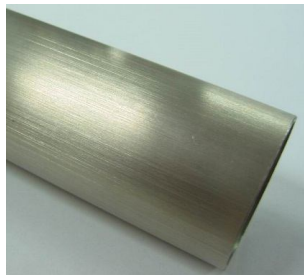
## Spacers



## Endcaps



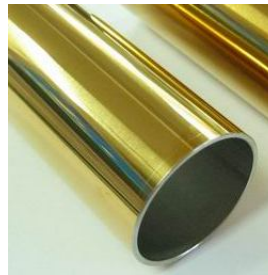
## Tubes



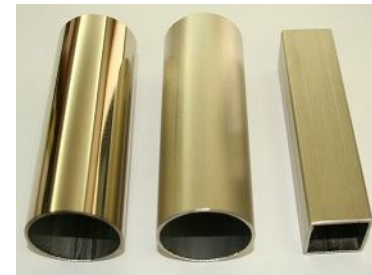
Hairline



Hairline,Ti (Gold)



Mirror, Ti (Gold)

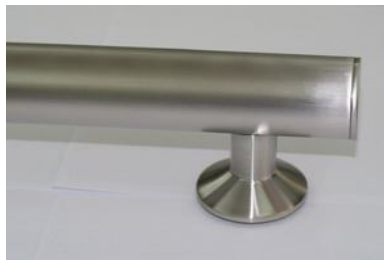


Ti (White-Gold)



Oval Tubes

## Round Handrails, Dia: 38.1mm. and 50.8mm.



Hairline, Ti(Gold) + anti fingerprint coating



Hairline, Ti(Gold)

Hairline, Ti(Silver-Grey) + anti fingerprint coating



Hairline, Ti(Silver-Grey)

Mirror, Ti (Gold)



Hairline, Ti (Nickel-Silver)



Hairline, Ti(Black) + anti fingerprint coating



Oval Handrails: 62 x 38mm. and 75 x 42mm.



Ti (White-Gold)

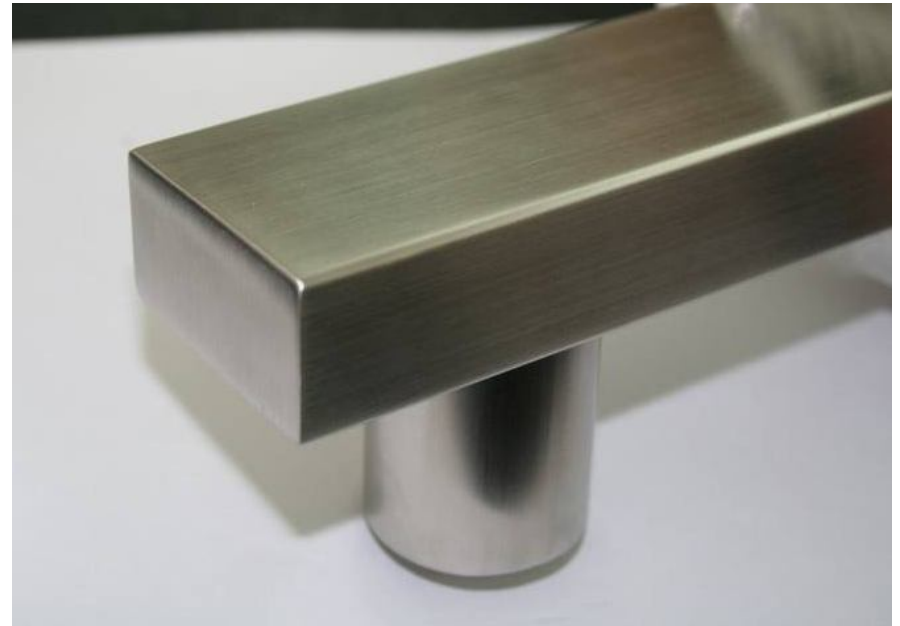
Mirror, Ti (Bronze)

## Rectangular Handrails

Sections:

50 x 25mm.

80 x 40mm.



## Flat Bar Handrails

